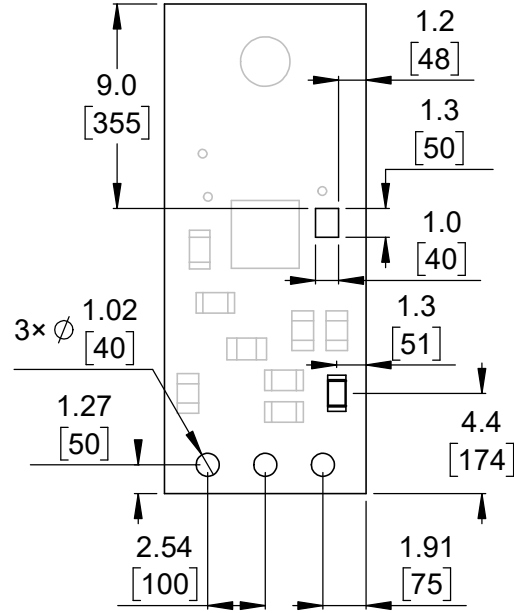
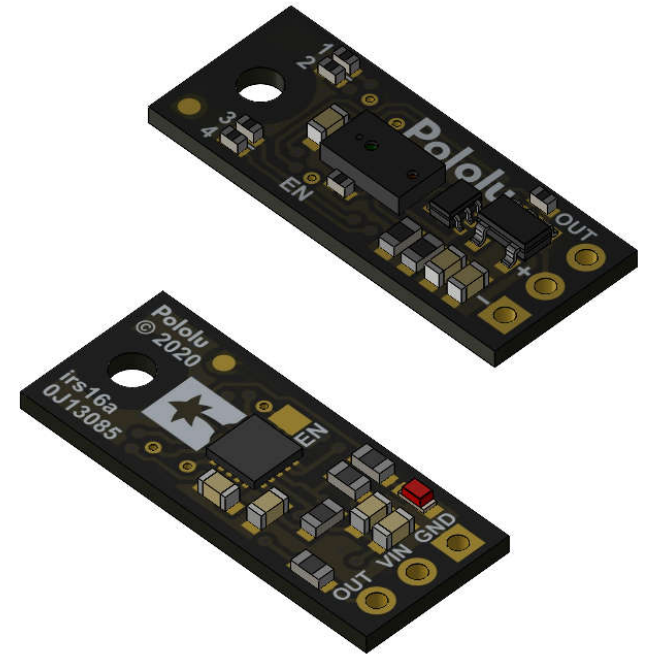


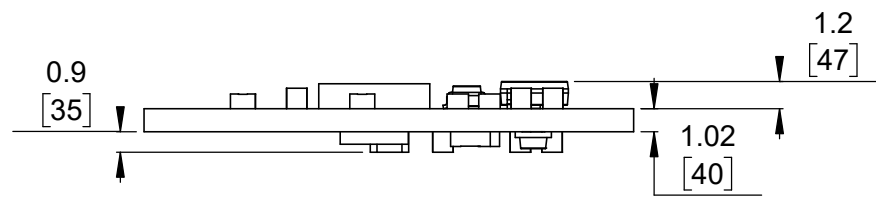
① Board dimensions (top view)  
Scale 3:1



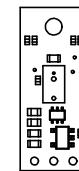
② Connector callouts (bottom view)  
Scale 3:1



③ Isometric view  
Scale 3:1



④ Profile  
Scale 3:1



⑤ Actual size  
Scale 1:1

- 1. Intended for #2 and M2 screws.
- 2. To get the specified scale, select 100% in print settings.
- 3. Drill location tolerance:  $\pm 0.1$  [ $\pm 5$ ].
- 4. Board edge tolerance:  $\pm 0.3$  [ $\pm 10$ ].

<a href="https://www.pololu.com/category/283">https://www.pololu.com/category/283</a>	
Name: Pololu Digital Distance Sensor	Item number: 4050, 4052, 4054, 4064
Drawing date: 2 June 2021	Dev code: irs16a
Units: mm [mil]	Material: mixed

