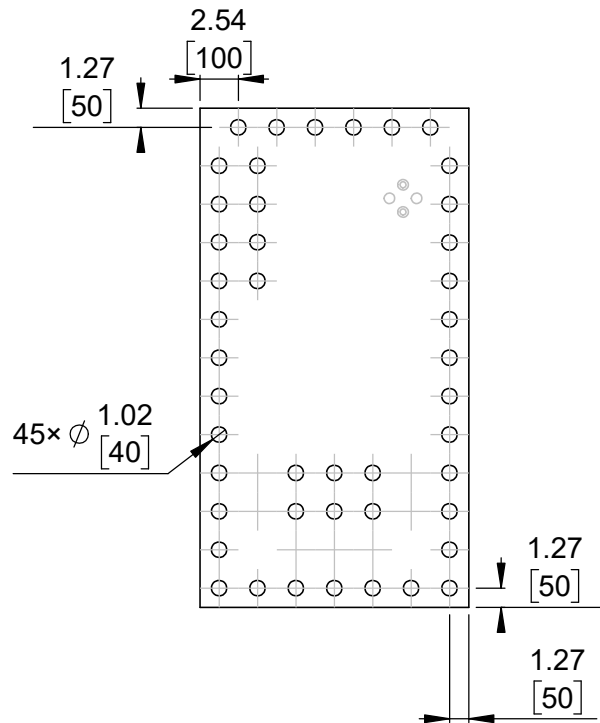
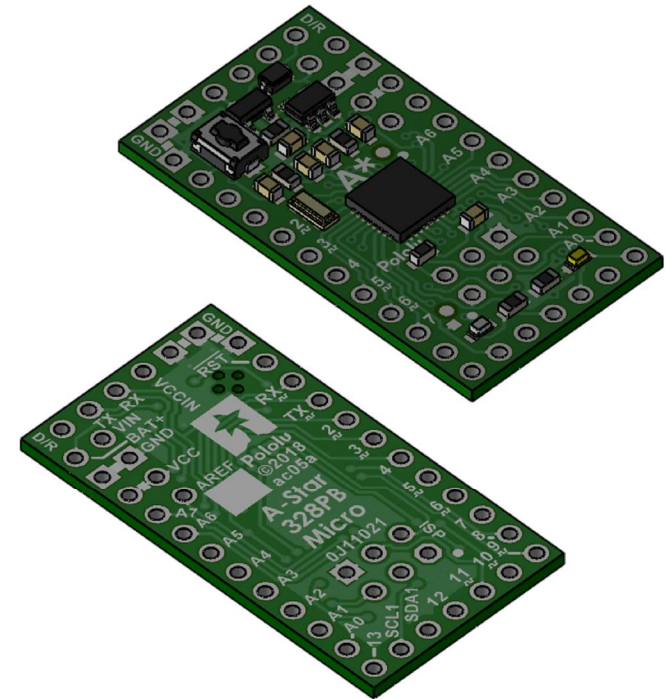


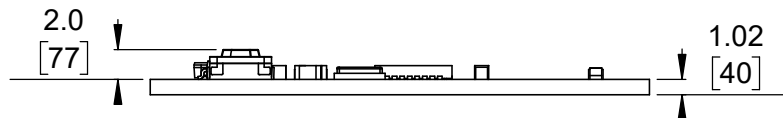
① Board dimensions (top view)
Scale 2:1



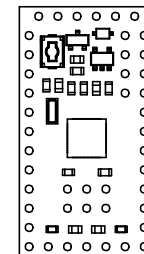
② Connector callouts (bottom view)
Scale 2:1



③ Isometric view
Scale 2:1



④ Profile
Scale 2:1



⑤ Actual size
Scale 1:1

1. Grid lines indicate 2.54 mm [100 mil] spacing.
2. To get the specified scale, select 100% in print settings.
3. Drill location tolerance: ± 0.1 [± 5].
4. Board edge tolerance: ± 0.3 [± 10].

<https://www.pololu.com/category/239/a-star-328pb-micro>

Name: A-Star 328PB Micro		Item number: 3160-3163
Drawing date: 19 February 2018	Dev code: ac05a	 © 2018 Pololu Corporation
Units: mm [mil]	Material: mixed	